

3H/4H series hand valve

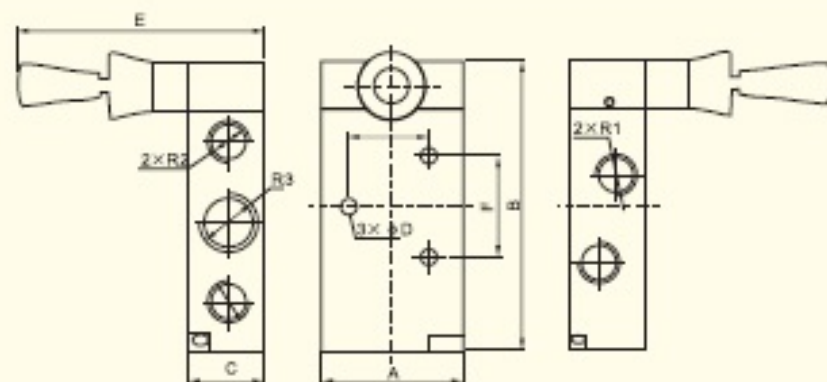
Symbol :



4H210-08

4H310-10

Outline dimensions



Model	φD	A	B	C	E	F	J	R1	R2	R3
4H110-06										
4H210-08	4	35	76.3	22	94.5	21	21	R1/4	R1/8	R1/4
4H310-10	4	40	92	27	100	28	28	R3/8	R1/4	R3/8
4H410-15	5.5	50	124	34	105	28.2	34.6	R1/2	R1/2	R1/2

Reference models

3H/4H	2	10	-	08
3H: 2/4	Series code	Position number		Port size
Three-hole	1: 100 series	10: Single-head		06: 1/8 "
two-gang	2: 200 series	dual-position		08: 1/4 "
4H: 2/5	3: 300 series			10: 3/8 "
Five-hole	4: 400 series			15: 1/2 "
two-gang				

Technical specifications

Model	3H210-08 4H310-08	3H310-10 4H310-10	3H410-15 4H410-15
Working fluid	Air		
Acting mode	Direct acting type		
Effective sectional cross area (mm ²)	16(CV=0.89)	25(CV=1.4)	30(CV=1.68)
Port size	1/4 "	3/8 "	1/2 "
Operating pressure	0~8.0kgf/cm ²		
Working temperature	5~60℃		
Lubrication oil	Not need		
Operating angle	±15		
Weight (kg)			
Material of main parts	Body	Aluminum alloy	
	Seal ring	NBR	